

Panasonic

System Solutions Company

Information Systems

Technical Bulletin

Bulletin Number MSV6508

Product Category: Point of Sales

Model Number(s): System Manager Pro (SMP), System Manager, MWS, 7500/5500 Stand Alone

Subject: Adjusting Daylight Savings Time 2007



Panasonic System Solutions Company (PSSA)
Unit of Panasonic Corporation of North America
Information Systems – POS

Panasonic

ideas for life

Bulletin Purpose:

This bulletin provides information regarding adjusting date/time for daylight savings. The bulletin details how to adjust the date/time manually as well as how to make the necessary adjustments for the KVS and Stand Alone registers.

Panasonic Reference Materials:

What	Where	Model # / Filename
Adjusting Daylight Savings Time 2007	B2B\Technical Support and Product Service\Bulletins	MSV6508

SMP/System Manager Users:

When adjusting date/time please verify the following:

1. Ensure computers are running Automatic Updates
 - a. The probability for computers not running Automatic Updates is high probability.
2. Ensure that with SMP installations the EOD is run after 2:00 a.m.
 - a. This is a medium probability since SMP's EOD process sets the date/time on each workstation. However, the EOD must be run after 2: a.m. in order for each workstation to be automatically updated. If EOD is set to run at a different time the user must send the new time to each workstation from the SMP Upload/Download page. The user will also need to go into SMP/Configuration/Date Time screen, select the KVS and select "Set Date Time" option.
3. Ensure computers are running Windows XP SP2
 - a. The probability of computers not running Windows XP SP2 is a low since as of 2005 Panasonic has required that Windows XP SP2 be in installed.

Microsoft will be sending an automatic update to Windows XP SP2 machines to adjust DST; however, many users do not configure automatic updates for justifiable reasons. There is an executable that may be run on the PC to update daylight savings time. Click on the following link for details:

<http://www.microsoft.com/downloads/details.aspx?familyid=66F1420C-DF2D-400B-A8A9-EF9061A9A3CA&displaylang=en> .

Below are Microsoft Web Sites that discuss this issue:

<http://support.microsoft.com/kb/928388>

http://support.microsoft.com/gp/cp_dst



Panasonic System Solutions Company (PSSA)
Unit of Panasonic Corporation of North America
Information Systems – POS

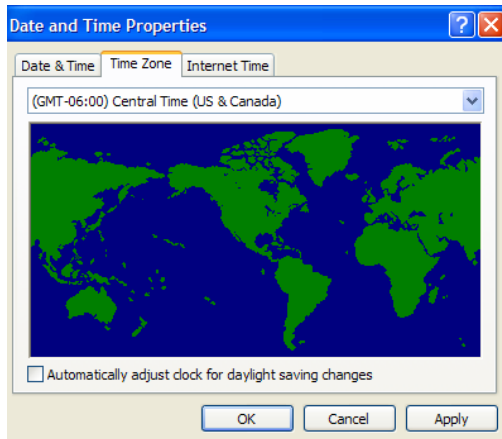
Panasonic ideas for life

<http://www.kbalertz.com/931836/February.cumulative.update.Microsoft.Windows.operating.systems.aspx>

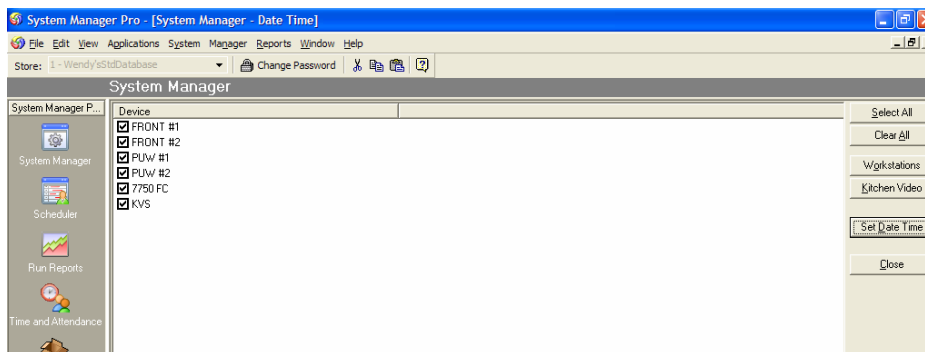
Dealers will need to install this patch on each PC before March 11, 2007.

Manual Procedure- If patch is not installed; the store must manually change the PC time:

1. Turn off daylight savings time. Go to Start-Control Panel, a separate window will pop up, click on the Time Zone tab and uncheck 'Automatically adjust clock for daylight savings changes'.



2. Open SMP from the Configuration drop down, double click on Date Time. From the Date and Time screen, select all devices including KVS and click on the "Set Date Time" option.



3. Confirm the time change on each workstation

NOTE: If using JS7900's or JS930's you must disable daylight savings in the operating system. On March 11th managers should verify that the manual time change stayed adjusted. Three weeks later the managers should re-verify that the old daylight savings time doesn't re-adjust the time.



Panasonic System Solutions Company (PSSA)
Unit of Panasonic Corporation of North America
Information Systems – POS

Panasonic

ideas for life

MWS Users:

The same should apply as above SMP users as long as the PC's operating system has been up-graded to Windows XP SP 2. If not running XP SP 2, refer to the manual procedure.

Once the Date and Time is changed in Windows use MWS to update the Time on the registers and the KVS.

1. From MWS select the Preset Data icon
2. Select the download tab
3. Select download current Date & Time
4. Select the downline tab
5. Select downline Date & Time
6. Verify correct time change on all registers

To change the time on the KVS perform the following steps:

1. Locate the Master register #1
2. Use the manager key to go to Manager Mode key position
3. Press 5 cash
4. Press 40 (KVS Programs) cash
5. Press cash
6. Press cash
7. Turn key to Register Mode

7500/5500 Stand Alone Registers:

1. Locate the Master register #1
2. Use the manager key to go to Manager Mode key position
3. Press 5 cash
4. Press 33 (Date and Time) cash
5. Enter HH MM (use military time format) then press subtotal
6. Press cash
7. Press 60 (downline programming) cash
8. Press 0 (Date & Time) cash
9. Press 40 (KVS programs) cash
10. Press cash
11. Press cash
12. Turn Key to Register Mode
13. Verify correct time change on all registers



Panasonic System Solutions Company (PSSA)
Unit of Panasonic Corporation of North America
Information Systems – POS